



Borough  
of Rockaway

# THE RECYCLING NEWS

ONE EAST MAIN STREET • ROCKAWAY, NJ 07866 • 973-627-2000

2024 EDITION

## 2024 GARBAGE AND RECYCLING SCHEDULE PG. 2 - 3



cycle.  
use.  
new.  
think.

## CONTACT AND SOCIAL MEDIA INFORMATION PG. 15

FOR MORE INFORMATION VISIT: [ROCKAWAYBOROUGH.ORG](http://ROCKAWAYBOROUGH.ORG) OR [MCMUA.COM/TOWNS.ASP](http://MCMUA.COM/TOWNS.ASP) (Click Town)

**NO ON-STREET PARKING WHEN ROAD IS ICE OR SNOW COVERED**

# GARBAGE PICK-UP SCHEDULES

## GARBAGE COLLECTION ROUTE A GARBAGE IS COLLECTED ON THURSDAYS. ROUTE B GARBAGE IS COLLECTED ON FRIDAYS. (SEE BELOW FOR ROUTES.)

To avoid missing pick-up, please put containers out at the curb line the night before. A maximum of three (3) 32-gallon containers per week per household will be collected. Each container should have handles, be covered with a lid, and weigh no more than 50 pounds. In addition, 3 bulky items, such as furniture, will be picked up weekly with garbage.

\*When garbage collection falls on a holiday (New Year's Day, Memorial Day, Independence Day, Labor Day, Thanksgiving Day or Christmas Day), garbage will be typically be picked up the following day, but please check <https://www.bluediamonddisposal.com> or the Recycle Coach app for updates.

## BULK ITEM COLLECTION

Three bulk items are allowed and will be picked up each week with your garbage. A chair, couch or table, for example, can be put out with the regular garbage. Carpet rolled and tied in a 4' length counts as one item. Three rolls of carpet count as three items. Metal items should not go out as bulk items with regular garbage.

## SCRAP METAL COLLECTION BY APPOINTMENT ONLY

Scrap metal items should be put at curbside the day before a scheduled pickup. For example, metal folding chair should go out only on metal day, or be brought to the recycling center and placed in the scrap metal container. Refrigerators, freezers and air conditioners must be certified Freon free or they will not be picked up. Scrap metal will be picked up the last Wednesday of each month by appointment only. Please call Blue Diamond at 973-598-9800. OR bring your scrap metal to the scrap metal container at the Recycling Center. Also see page 3.

## ROUTE A GARBAGE: THURSDAYS | RECYCLING & VEGETATIVE: SEE DATES ON PAGE 3

Adams Street	Elycroft Avenue East	Mannino Drive	Spruce Street	W. Main St. from Lakeside
Addison Avenue	Elycroft Avenue West	Marshall Avenue	Stephen Place	Drive westerly to Route 46
Andrea Drive	Farview Drive	McKinley Drive	Swedes Mine Road	Walnut Place
Arbor Avenue	Farview Road	Meadowview Avenue	Sweetbriar Road	White Birch Drive
Baker Street	Glenview Place	Monroe Place	Sylvan Way	William Drive
Birchwood Road	Harrison Avenue	Mountain Road	Valley View Road	Willow Avenue
Cedar Lane	Hemlock Road	Mt. Pleasant Avenue	W. Longview Road	Woodland Avenue
Centennial Drive	Hickory Place	Nichols Drive		
Chester Avenue	Highview Avenue	Overlook Drive		
Chestnut Terrace	Hyland Avenue	Phillip Drive		
Crestwood Road	Kelly Court	Pleasant Place		
David Drive	Lakeside Drive	Robert Street		
Dominic Drive	Lawrence Drive	Rose Lane		
Duncan Lane	Lindbergh Lane	Route 46 from W. Main St.		
Easton Avenue	Longview Road	to Franklin Avenue		

PLEASE  
**RECYCLE CARDBOARD**  
DO NOT USE BOXES AS GARBAGE CONTAINERS.

## ROUTE B GARBAGE: FRIDAYS | RECYCLING & VEGETATIVE: SEE DATES ON PAGE 3

Academy Street	Douglas Road	Hillside Avenue	Marylin Drive	Summit Street
Adler Court	Drake Avenue	Hill Street	Mill Lane	Union Street
Ann Street	E. Flagge Street	Hoagland Avenue	Mott Place	Van Duynes Avenue
Bank Street	E. Main Street from	Jackson Avenue	Oak Street	W. Flagge Street
Barnett Street	Jackson Ave. easterly	James Court	Ogden Avenue	W. Lincoln Avenue
Beach Street	to Route 46	Jay Street	Orchard Street	W. Main St. from Jackson
Broad Street	E. New Street	Jefferson Street	Pine Street	Ave. to Lakeside Drive
Brook Street	Elm Street	John Street	Rockaway Avenue	W. New Street
Burton Lane	Franklin Avenue	Keller Avenue	Rockwood Drive	Wall Street
Central Avenue	Garden Avenue	Kelsey Street	Rt. 46 from E. Main St.	White Meadow Ave
Chateau Gardens	George Street	Laurelwood Drive	to Franklin Ave.	Woods Edge on Route 46
Church Street	Gill Avenue	Liberty Place	Seminole Avenue	Woodside Avenue
Cobb Street	Halsey Avenue	Lincoln Avenue	Seward Street	Woodstone Road
Dock Street	Hibernia Avenue	Maple Avenue	Short Street	
Donna Drive	Highland Avenue	Maplewood Drive	Stickle Avenue	

# RECYCLING PICK-UP SCHEDULES

## RECYCLING COLLECTION EVERY OTHER TUESDAY

Recycling must be at the curb by 6:00 am, however, we recommend placing recycling at the curb the night before to ensure pickup. Please see <https://mcmua.com> or the Recycle Coach App for updates.

<b>January</b>	<b>2</b>	<b>16</b>	<b>30</b>	<b>May</b>	<b>7</b>	<b>21</b>	<b>September</b>	<b>10</b>	<b>24</b>	
<b>February</b>	<b>13</b>	<b>27</b>		<b>June</b>	<b>4</b>	<b>18</b>	<b>October</b>	<b>8</b>	<b>22</b>	
<b>March</b>	<b>12</b>	<b>26</b>		<b>July</b>	<b>2</b>	<b>16</b>	<b>November</b>	<b>5</b>	<b>19</b>	
<b>April</b>	<b>9</b>	<b>23</b>		<b>August</b>	<b>13</b>	<b>27</b>	<b>December</b>	<b>3</b>	<b>17</b>	<b>31</b>

## VEGETATIVE COLLECTION EVERY OTHER WEDNESDAY APRIL-DECEMBER

Vegetative Collection includes grass, leaves and brush. Place leaves and grass in biodegradable brown paper bags or open containers with handles. Keep brush separate from grass and leaves. Do not sweep leaves into the gutter or street. Branches or brush must be tied with string in bundles not to exceed 18 inches in diameter and 4 feet in length. No limbs or brush over 3 inches in diameter will be accepted. Collections should be at the curb the night before. Please see <https://www.bluediamonddisposal.com> or the Recycle Coach App for updates.

<b>April</b>	<b>3</b>	<b>17</b>	<b>July</b>	<b>10</b>	<b>24</b>	<b>October</b>	<b>2</b>	<b>16</b>	<b>30</b>
<b>May</b>	<b>1</b>	<b>15</b>	<b>29</b>	<b>August</b>	<b>7</b>	<b>21</b>	<b>November</b>	<b>13</b>	<b>27</b>
<b>June</b>	<b>12</b>	<b>26</b>		<b>September</b>	<b>4</b>	<b>18</b>	<b>December</b>	<b>11</b>	<b>26</b>

**Vegetative Waste Containers Must Not Exceed 50 Pounds.** The carrier recommends using 32-gallon containers with handles or biodegradable brown paper bags. The 32-gallon containers with handles help keep the weight from exceeding 50 pounds, which prevents injuries to the crew.

---

**IN THE EVENT OF INCLEMENT WEATHER AND UP-TO-THE-MINUTE INFORMATION, PLEASE VISIT: [WWW.MCMUA.COM](http://WWW.MCMUA.COM)**

---

## RECYCLABLES NOT PICKED UP?

Call MCMUA after 3:00pm to report if your recyclables were not picked up or before 10:00am the following day. The direct phone number to the MUA, our hauler, is 973-659-3490.

*Please leave your name, phone, address, town and item missed in the general mail box.*

---

## LEAVES/SNOW ORDINANCE #183-10

Rockaway Borough Ordinance #183-10 prohibits the throwing of the leaves and snow into the streets. Residents are required to put their leaves in brown paper bags or containers, not to exceed 50 pounds, and place leaves curbside on scheduled days.

## REFRIGERATORS, FREEZERS, AIR CONDITIONING UNITS & OTHER FREON APPLIANCES

Effective January 1, 2024, all appliances containing Freon **MUST** be certified Freon-free before being dropped off at the Recycling Center or placed at the curb for a scheduled scrap metal pickup (see Page 9 for more information). If you purchase a new Freon appliance, it is best to have the old one removed at that time.

For an up-to-date list of companies that will evacuate the Freon from your old appliance and give you a "Certified Freon Sticker" or take your appliance away, please visit the Morris County Municipal Utility Authority (MCMUA) at <https://mcmua.com> or call 973-829-8006.

# RECYCLE RESPONSIBLY

## Prepare material properly

- ◆ Use a lid to prevent the wind from blowing recyclables out of your container(s). Lids will prevent rain and snow from getting into your container(s).
- ◆ If your recyclable material does not fit into one container, use more than one so that loose material is not sticking out. **Never use a plastic bag.**
- ◆ Flatten corrugated cardboard boxes and stack them into reusable containers or into another cardboard box.
- ◆ All recyclable materials must be empty, clean, dry, and free of food residue.
- ◆ Containers with contamination may not be collected. Remove contamination by next scheduled recycling day for pick up by the recycling crews.
- ◆ Recycling containers must be at the curb by 6:00 AM on the day of collection.
- ◆ Report missed recycling collection by 10:00 AM the day following collection.

## Use properly sized containers

- ◆ The weight limit for a single container is 50 pounds when full.
- ◆ It is recommended that containers be no larger than 32 gallons each to avoid exceeding the weight limit. Use multiple containers if necessary.
- ◆ Retail stores sell recycling carts with wheels that are too big. They will exceed the 50 pound weight limit when full. Do **NOT** use large 64 and 95 gallon carts.
- ◆ Containers must have handles.

## Only recycle what is acceptable

- ◆ Be careful to follow the recycling guidelines as advertised by your town and on the MCMUA's website at [www.MCMUA.com](http://www.MCMUA.com). Guidelines provide specific details about the materials that are and are not acceptable.
- ◆ Unacceptable materials increase the cost of operation and lower the value of recyclables. Your cooperation with these guidelines is greatly appreciated.
- ◆ If you have questions or would like recycling decals for your container, please contact your town's recycling coordinator or the MCMUA at 973-659-3490 or visit [www.mcmua.com](http://www.mcmua.com).



MORRIS COUNTY'S RECYCLING RESOURCE  
[WWW.MCMUA.COM](http://WWW.MCMUA.COM)



# Morris County Municipal Utilities Authority

## SINGLE-STREAM all-in-one RECYCLING

The Morris County Municipal Utilities Authority "all-in-one," single-stream recycling collection program allows cans, bottles, cardboard and all other paper to be mixed together for recycling. All of these items can go into one recycling container.

Recycle office paper, file folders, junk mail, envelopes, flyers, newspapers and inserts, magazines, catalogs, paperbacks and phone books, wrapping paper, paper bags, tissue and cookie boxes, paper towel and toilet tissue cores, frozen food boxes, cartons and boxes used for milk, juice, soup, broth, etc., 6-pack and 12-pack cartons from soda, clean paper ice cream containers. Corrugated cardboard must be flattened.

Recycle plastic containers (bottles and non-bottles) coded:

Plastic caps and lids larger than 3" in diameter are acceptable. The smallest acceptable plastic container is an 8-ounce yogurt cup. Containers must be empty.



Recycle aluminum and steel (tin) cans, loose metal jar lids, steel bottle caps, clean aluminum foil, pie plates and trays. Containers must be empty.

Recycle glass bottles and jars with caps and lids removed. Recycle loose metal caps and lids. Bottles and jars must be empty.

Do not recycle plastics coded



All items must be empty, dry, and free of food residue.

- No liquids
- No cups
- No plastic items smaller than 8-ounce yogurt cups; for example, do not recycle small plastic caps or pill bottles
- No VHS/VCR tapes
- No hangers
- No hardcover books
- No flower pots or trays
- No plant material or food waste
- No window panes, mirrors, glass vases, ceramics, or Pyrex® dishware
- No glass, plastics or metal other than what is listed
- No electronic waste (batteries, cell phones, computers, etc.)
- No paint, pesticides, oil and cleaners
- No waxed paper
- No waxed cardboard
- No Styrofoam™ or paper to-go containers
- No stickers or address label sheet waste
- No spray pumps or nozzles
- No straws
- No motor oil, gas or anti-freeze containers
- No clothing, textiles, or shoes
- No hoses
- No diapers
- No garbage
- Do not tie newspapers or cardboard
- No pizza boxes
- No aerosols or pressurized containers
- No plastic bags**
- No shredded paper**

**DON'T BAG**   
Recyclables



**NO PLASTIC BAGS IN RECYCLING**

Thank you for recycling right!



[WWW.MCMUA.COM](http://WWW.MCMUA.COM)



MORRIS COUNTY'S ENVIRONMENTAL RESOURCE



# RECYCLING SPECIFICATIONS

ITEM	HOW TO PREPARE	WHERE TO RECYCLE
<b>AEROSOL CANS</b>	Must be empty.	Not recyclable, throw in regular trash.
<b>AIR CONDITIONERS &amp; HUMIDIFIERS</b>	Must be Freon free and be accompanied by a Freon removal certification.	Recycling Center or contact Blue Diamond at 973-598-9800 to arrange a scrap metal pickup.
<b>BATTERIES, CAR</b>		Contact Morris County Municipal Utilities Authority (MCMUA) at 973-829-8006 to schedule an appointment to drop-off at a Household Hazardous Waste facility or locate a drop-off event.
<b>BATTERIES, HOUSEHOLD</b>	Tape the end terminals.	Not recyclable, throw in regular trash.
<b>BATTERIES, RESEARCHABLE</b>		Recycling Center or contact Morris County Municipal Utilities Authority (MCMUA) at 973-829-8006 to schedule an appointment to drop-off at a Household Hazardous Waste facility or locate a drop-off event.
<b>BOOKS, HARDCOVER</b>		Book donation bin.
<b>BOOKS, SOFTCOVER</b>		Book donation bin or curbside pickup.
<b>BOXES</b>	Flatten all boxes.	Curbside pickup or Recycling Center.
<b>BOXES, PIZZA</b>		Not recyclable, throw in regular trash.
<b>BRANCHES AND BRUSH</b>	Tie in bundles not to exceed 18" in diameter or 4' in length.	Curbside pickup.
<b>CANS, METAL</b>	Empty and rinse clean.	Curbside pickup.
<b>CELL PHONES/ACCESSORIES</b>	Place in a Ziplock bag.	Recycling Center Shed.
<b>CLOTHING/LINENS/SHOES, USED</b>		Recycling Center Clothing Bin.
<b>COMPUTER MONITORS</b>		Recycling Center (Electronics Container) or contact Morris County Municipal Utilities Authority (MCMUA) at 973-829-8006 to schedule an appointment to drop-off at a Household Hazardous Waste facility.
<b>COMPUTERS/LAPTOPS</b>		Recycling Center (Electronics Container) or contact Morris County Municipal Utilities Authority (MCMUA) at 973-829-8006 to schedule an appointment to drop-off at a Household Hazardous Waste facility.
<b>CONCRETE OR ASPHALT</b>		Contact Morris County Municipal Utilities Authority (MCMUA) at 973-829-8006 for more information about applicable fees and proof of residency required to drop-off at a MCMUA Transfer Station.
<b>CONSTRUCTION DEBRIS</b>		A construction dumpster is available at the Recycling Center, for residential use only, during the months of April and September. At other times, contact Morris County Municipal Utilities Authority (MCMUA) at 973-829-8006 for more information about applicable fees and proof of residency required to drop-off at a MCMUA Transfer Station.
<b>DISHWASHER</b>		Contact Blue Diamond at 973-598-9800 to arrange for a scrap metal pickup.
<b>DRYER</b>		Contact Blue Diamond at 973-598-9800 to arrange for a scrap metal pickup.
<b>FISH TANKS/AQUARIUMS</b>		Not recyclable, throw in regular trash.
<b>GAS GRILL</b>	Remove propane tank.	Recycling Center or contact Blue Diamond at 973-598-9800 to arrange for a scrap metal pickup.
<b>GLASS BOTTLES AND JARS</b>	Remove lids and rinse to discourage odors, bugs, bees and rodents. Place in single-stream container. Do not recycle petroleum or pesticide containers.	Curbside pickup or Recycling Center.
<b>GRASS</b>		Curbside pickup.

# RECYCLING SPECIFICATIONS CONTINUED

ITEM	HOW TO PREPARE	WHERE TO RECYCLE
HOUSEHOLD HAZARDOUS WASTE		Contact Morris County Municipal Utilities Authority (MCMUA) at 973-829-8006 to schedule an appointment to drop-off at a Household Hazardous Waste facility or locate a drop-off event.
INKJET TONER CARTRIDGES	Bag and tape ends securely.	Recycling Center Shed.
JUNK MAIL	Place in single-stream container. Do not tie or tape. Remove all plastic mailing wrappers.	Curbside pickup.
LAWN MOWERS	Remove oil and gas.	Recycling Center Metal Bin.
LEAVES		Curbside pickup.
LIGHT BULBS, FLUORESCENT		Contact Morris County Municipal Utilities Authority (MCMUA) at 973-829-8006 to schedule an appointment to drop-off at a Household Hazardous Waste facility or locate a drop-off event.
MATTRESSES		Curbside pickup as bulky item on regular garbage day.
MICROWAVES		Recycling Center Electronics Shed.
MIRRORS		Not recyclable, throw in regular trash.
MOTOR OIL, USED		Contact Advanced Auto at 973-625-2828 or Jiffy Lube at 973-586-3338.
PAINT CANS, EMPTY AND DRY	Must be empty and dry.	Not recyclable, throw in regular trash.
PAPER, SHREDDED		Not recyclable, throw in regular trash.
PLASTIC BAGS		Not accepted in curbside recycling bins or at Recycling Center. Return to plastic bag recycling container located at your supermarket or place of purchase.
PLASTIC BOTTLES/CONTAINERS (1, 2, 5)	Rinse to discourage odors, bugs, bees and rodents. Place in sturdy container. <b>Do no recycle petroleum or pesticide containers.</b> Remove and discard plastic caps.	Curbside pickup or Recycling Center.
PRESSURIZED TANKS		Contact Morris County Municipal Utilities Authority (MCMUA) at 973-829-8006 to schedule an appointment to drop-off at a Household Hazardous Waste facility or locate a drop-off event.
PROPANE GAS CYLINDER (BBQ SIZE OR SMALLER)		Contact Morris County Municipal Utilities Authority (MCMUA) at 973-829-8006 to schedule an appointment to drop-off at a Household Hazardous Waste facility or locate a drop-off event.
SCRAP METAL BRASS/COPPER/ALUMINUM/STEEL		Contact Blue Diamond at 973-598-9800 to schedule curbside pickup or bring to Recycling Center.
STYROFOAM		Not recyclable, throw in regular trash.
TELEPHONE BOOKS		Curbside pickup or Recycling Center.
TELEVISIONS		Recycling Center (Electronics Container) or contact Morris County Municipal Utilities Authority (MCMUA) at 973-829-8006 to schedule an appointment to drop-off at a Household Hazardous Waste facility.
TIRES	Purchase a coupon at the Municipal Building (\$5 for all tires up to 16").	Bring tires with coupon to the Recycling Center.
TOILETS		Not recyclable, throw in regular trash.
VASES	Clean and dry.	Recycling Center Shed.
VCR TAPES		Not recyclable, throw in regular trash.

# HOUSEHOLD BATTERY MANAGEMENT

## ALKALINE BATTERIES (Non-hazardous and use-once.) THROW IN THE GARBAGE



Garbage, not rechargeable, single use, non-hazardous and **not** recyclable.

**Name on battery:** Alkaline, Zinc-carbon, and Zinc-chloride (Heavy Duty).

**Proper Disposal:** Garbage

Dispose of in garbage. Can be placed in regular trash as these are **NOT** hazardous.

## RECHARGEABLE BATTERIES (Hazardous and multi-use.) RECYCLE WITH **call2recycle**



Rechargeable, multi-use, hazardous yet recyclable with Call2Recycle.

**Name on battery:** Lithium ion (Li-ion), Nickel Cadmium (Ni-Cad), Nickel Metal Hydride (Ni-MH), and Small Sealed Lead Acid (SSLA/Pb).

**Proper Disposal:** Call2Recycle Box

Recycle with Call2Recycle drop-boxes ([call2recycle.org/locator](http://call2recycle.org/locator)) (batteries must weigh less than 11 lbs. each) **OR** take to the MCMUA Household Hazardous Waste facility ([www.MCMUA.com](http://www.MCMUA.com))

## OTHER BATTERIES (Hazardous and use-once.) TAKE TO HOUSEHOLD HAZARDOUS WASTE PROGRAM



Lithium, Button Cell. Not rechargeable, single use, hazardous and not recyclable.

**Name on battery:** Lithium (single use lithium-ion batteries may look like alkaline batteries -- read battery carefully).

**Proper Disposal:** Hazardous Waste  
Take to MCMUA Household Hazardous Waste facility. (Bag or tape each battery's terminal)

Dry cell, rechargeable batteries are found in cell and cordless phones, laptop computers, cordless power tools, digital cameras, remote control toys, e-bikes, and numerous other everyday items. **DO NOT THROW RECHARGEABLE BATTERIES IN THE TRASH OR RECYCLING BIN.** Improper battery disposal has caused an increased number of fires in New Jersey recycling centers, waste facilities and garbage trucks, resulting in millions of dollars in damage and lives put in danger. Do your part to be battery safe smart!

## call2recycle ATTENTION BUSINESSES, SCHOOLS & INSTITUTIONS

Call2Recycle® will provide free-of-charge drop-off boxes to any non-residential entity for the collection and recycling of their own rechargeable batteries. All one has to do is sign up online at [www.call2recycle.org](http://www.call2recycle.org). Retailers and community recycling centers open to the public will be listed on the Call2Recycle® zip code locator and toll-free help-lines to encourage residents to recycle. Public agencies and businesses can participate in the Call2Recycle® program without being advertised as a public drop-off location if they do not want to be listed as such. Since everything is free-of-charge, the MCMUA is encouraging every business and/or public agency to request a drop off box, for its office or work site.

## RECYCLING ORDINANCE CHAPTER 203

Go to: [www.rockawayborough.org](http://www.rockawayborough.org) and click "Help Me Find", then "Ordinances." Residents and businesses should familiarize themselves with this ordinance. Violations and fines can result from non-compliance.



## OUCH!

### PLEASE KEEP NEEDLES OUT OF THE RECYCLING BIN!

Nobody wants to be stuck with a used needle. That is why you shouldn't throw your used needles in the recycling bin or inside a recycling container. Properly throwing away a used needle protects not just your family members and pets, but also protects the recycling and trash workers who help clean our streets. [www.safeneedledisposal.com](http://www.safeneedledisposal.com)

## Vases - A Reuse Program:

If you have unwanted vases or flower stem holders, bring them to the Recycling Center Shed. Do not put them into single stream-recycling. We will give them to local florists for reuse.





# ADDITIONAL DISPOSAL INFORMATION

## COMMONLY QUESTIONED ITEMS AND HOW TO DISPOSE OF THEM



### Latex Paint:

Latex water-based paints are not hazardous and are not accepted at MCMUA hazardous waste disposal programs. Latex paint may be safely disposed of in the garbage. First, dry out latex paint cans by stirring absorbent material such as cat litter into the paint. The paint will harden within a few minutes. Then, leave the lid off the can, put the lid and the can into the regular garbage.

### Oil Based Paint:

Oil based paint is a flammable material. It must be disposed of at a Morris County Household Hazardous Waste Disposal Day or by appointment.



### Electronics:

State law prohibits the disposal of electronics and televisions in the trash. All TV's and electronics must be brought to the Recycling Center. The following items can be recycled in the electronics container: desktop computers, personal computers, computer monitors, televisions, desktop printers, fax machines.

**All electronics/Televisions should be placed as far back into the container as possible.**



### Cardboard:

Dry, flattened cardboard should be placed curbside every other Tuesday on Recycling Day, or brought to the Recycling Center.

### Scrap Metal

White goods such as washing machines, dryers, stoves and dishwashers can be brought to the scrap metal container at the Recycling Center (or see page 2 for collection information). **Effective January 1, 2024, all appliances containing Freon MUST be certified Freon-free before being dropped off at the Recycling Center or placed at the curb for a scheduled scrap metal pickup.**

**REFRIGERATORS AND FREEZERS MUST HAVE THE DOOR AND FREON REMOVED.**

**NO PROPANE TANKS, HELIUM TANKS, OR FIRE EXTINGUISHERS.**



### Household Hazardous Waste:

Prepare an inventory prior to calling the MCMUA. Check out the Morris County website for the latest information on Household Hazardous Waste, [www.mcmua.com](http://www.mcmua.com). You may also call 973-829-8006 for collection dates and sites.

### Construction Items:

**Residential construction items can be brought to the Recycling Center in April and September only.** Items such as windows, doors and sheetrock from small do-it-yourself projects can be placed in the dumpster. The dumpster will remain at the Recycling Center until it is full or for one month only. **Please note that this dumpster is not to be used for large jobs performed by contractors, and it is not to be used for bulk items that can be put out weekly.**

**NO BRICK PAVERS, CINDER BLOCKS, CONCRETE, GARDEN HOSES, RUGS OR METAL ITEMS.**

# DO NOT PUT INTO THE RECYCLING RECEPTACLE

No clay pots, window panes, mirrors, glass vases, ceramics, light bulbs, Pyrex®

No plastics coded 3 V, 4 LDPE, 6 PS, 7 OTHER

No plastic wrap or shrink wrap

No spray pumps, nozzles, straws

No plastic bags

No flower pots or trays

No pizza boxes

No Styrofoam™

No batteries

No small medicine bottles and lids

No aerosol or pressurized containers

No VHS/VCR tapes, CDs/DVDs

No shredded paper

No hardcover books

No auto, paint, gas containers  
No propane tanks

No hoses

No electronics

No clothing, shoes, flip flops, textiles

None of the above

No insulated box liners

No liquids • No garbage • No small plastic caps  
No plastic items smaller than an 8-ounce yogurt cup • No scrap metal • No cups  
No pesticides • No oil or cleaners • No stickers/  
address label sheet waste • No plant material  
No food waste • No waxed cardboard or waxed paper • No items that can be plugged in  
**No plastic bags**

To recycle electronics or Household Hazardous Waste, make an appointment at  
**WWW.MCMUA.COM**

No metal appliances, pots, pans

No hangers

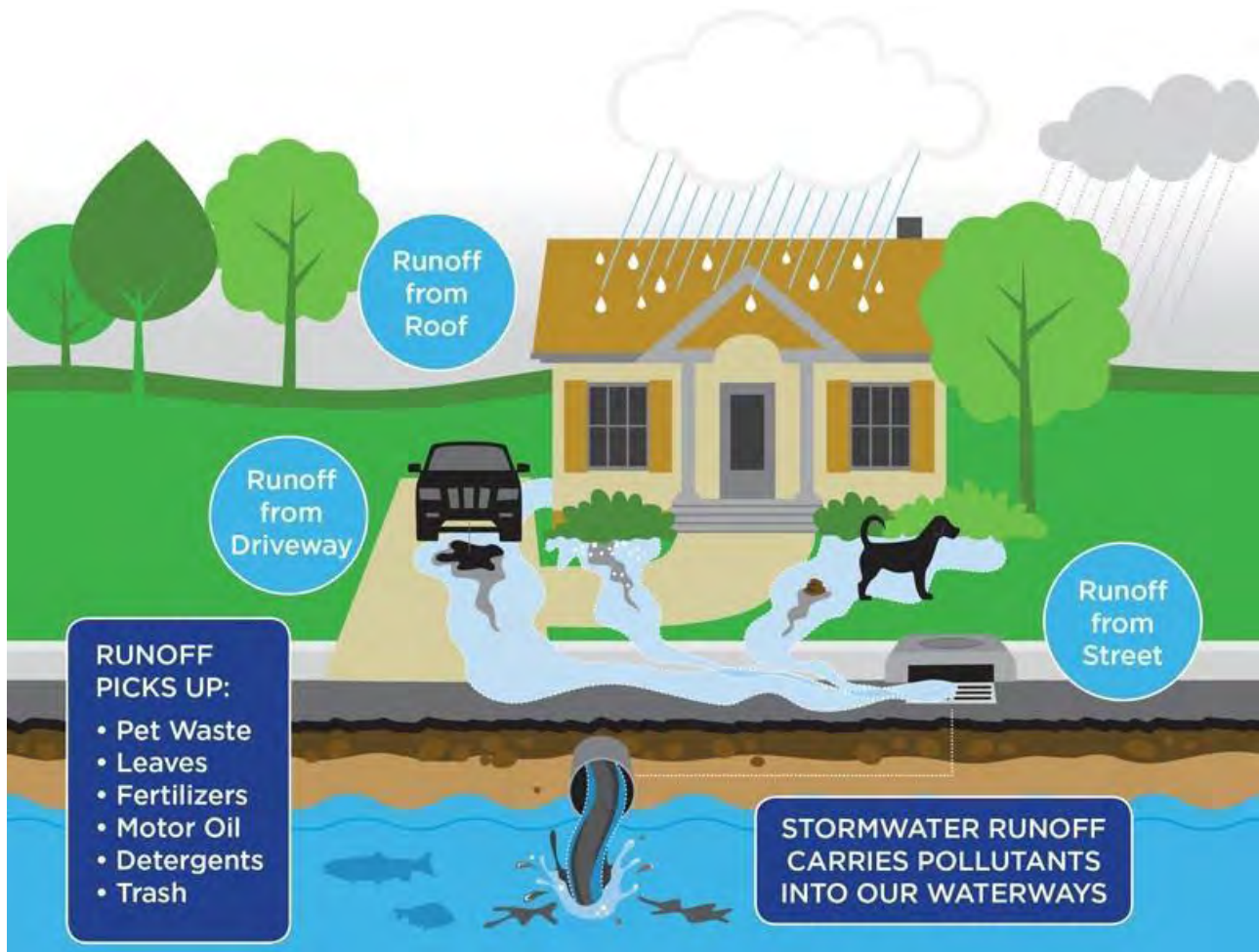


MORRIS COUNTY MUNICIPAL UTILITIES AUTHORITY  
MORRIS COUNTY'S ENVIRONMENTAL RESOURCE

# SOLUTIONS TO STORMWATER POLLUTION

## EASY THINGS YOU CAN DO EVERY DAY TO PROTECT OUR WATER

- Limit your use of fertilizers and pesticides
- Dispose of yard waste properly
- Properly use and dispose of hazardous materials
- Don't feed wildlife
- Clean up after your pet
- Keep pollution out of the storm drains
- Don't litter



For more information on stormwater related topics, visit:

New Jersey Department of Environmental Protection

[www.njstormwater.org](http://www.njstormwater.org). or <https://dep.nj.gov/cleanwater/nj>

United States Environmental Protection Agency

[www.epa.gov/npdes/stormwater](http://www.epa.gov/npdes/stormwater) or [www.epa.gov/nps](http://www.epa.gov/nps).

# COMMUNITY RESOURCES

## BLOOD PRESSURE SCREENING

FREE blood pressure screening for Rockaway Borough Residents at the Rockaway Borough Public Library the 2<sup>nd</sup> Wednesday of each month at 1:30 pm.

## EMERGENCY ALERT SYSTEM – Smart 911 (RAVE) Smart911<sup>®</sup>

Scan the QR code or see the Borough’s website for instructions on how to sign up for alerts.



## PARKS AND RECREATION NEWSLETTER!

The Parks and Recreation committee volunteers create a periodic newsletter which can be found on the Borough website under “Residents” and then “Newsletters.”

## SENIOR GROUP (55 AND OLDER)

The Rockaway Borough Senior Group meets twice a month at the Community Center. Contact the Municipal Building at 973-627-2000 for more information.

## RECYCLE COACH

### RECYCLE COACH

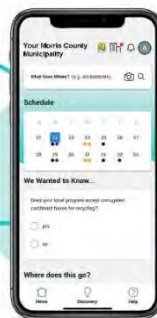
Find your Waste and Recycling information on Morris County’s Recycle Coach App



We’ve partnered with Recycle Coach to help you quickly find the information you need 24/7 through Mobile or on the Web.

**What Goes Where Tool**  
Use the search tool either by typing in an item or taking a picture of it to find out disposal instructions. It includes drop-off locations, event details, and collection requirements.

**Weekly poll/quiz to test your Recycling Knowledge!**



**Personalized Collection Schedule and Pick-Up Reminders**  
Set reminders for your pick-up schedule through in-app notifications or email.

**Special add-ons include:**

- ✓ Receive Emergency and non-emergency notifications
- ✓ Available in Spanish and English

Download the App today!

1. Scan the QR Code and download Recycle Coach from the App Store or Google Play.
2. Open the App, and when prompted to search location, enter your Municipalities name.
3. Click your preferred language and enter your address.

Now you are all set-up! Welcome to Recycle Coach!



SCAN ME



# IMPORTANT REMINDERS

## MUNICIPAL PARKING

Daily, weekly, monthly and yearly parking permits are available for municipal lots throughout the Borough. For more information, please call 973-627-2000 x221.

Ordinance 23-17 amended Chapter 241, Vehicles and Traffic, of the Code of the Borough of Rockaway. The changes include limiting parking in Municipal Lots 1-4 to four hours and prohibiting overnight parking in most municipal lots (with the exception of vehicles parked in areas designated for permit parking and displaying a valid parking permit issued by the Borough of Rockaway). A copy of the ordinance can be found on the Borough website or obtained through the Borough Clerk.

## PERMITS REQUIRED

You must obtain permits for various actions including, but not limited to:

- Renovations, demolition, or new construction
- Adding a fence, pool, generator, shed or other accessory structure
- Removal of trees
- Adding, removing, or moving soil on your property
- Any projects that affect, or are adjacent to, a street, curb or sidewalk
- Any filming occurring within the Borough on public or private property
- Opening a business within the Borough
- Use of fields or other Borough facilities

You must call 811 or 800-272-1000 three (3) business days prior to digging for a free markout.

## REQUIREMENTS FOR SELLING YOUR HOME

Prior to selling your home, you must:

- Obtain a Certificate of Compliance through the Fire Prevention Bureau
- Schedule a final water/sewer reading through the Water Clerk
- Pay your property taxes in full

For more information regarding requirements for selling your home, please visit our website, [www.rockawayborough.org](http://www.rockawayborough.org) and click on "Help Me Find" and then "Applications/Forms."

## RESIDENTIAL RENTAL PROPERTIES

A Landlord Registration Form must be completed and returned to the Municipal Clerk for each residential rental property two units or less; three units or more must register with the Bureau of Housing Inspection.

## PARKING PROHIBITED DURING SNOW AND ICE EVENTS

Section 241-25.1 of the Code of the Borough of Rockaway prohibits parking on any street or highway whenever snow, ice, sleet, freezing rain, etc., has fallen and the accumulation is such that it covers the streets and until such time as the streets have been plowed and/or treated sufficiently that parking will not interfere with the normal flow of traffic.

# WATER UTILITY

## MANDATORY LEAD SERVICE LINE REPLACEMENT

On July 22, 2021, Governor Murphy signed legislation into law for mandatory lead service line replacement, “NJ Bill A5343/S3398,” P.L.2021, Ch. 183, effective immediately upon signature. Public community water systems must be inventoried and all known lead service lines and all service lines of unknown materials must be replaced by July 22, 2031.

The Borough of Rockaway is currently in the process of identifying what type of water service lines all Rockaway Borough water customers have entering their homes or businesses. This process is going to require the cooperation of all public water customers. Please test your service line with a scratch test and magnet test and then fill out the Water Material Identification Study. Additional information and instructions can be found at <https://www.rockawayborough.org/departments/publicworks/water.shtml> The property owner is responsible for the water line from the curb box (shut off).



Has your water bill increased unexpectedly?

Please reference the leak calculation chart below to see how a leak may impact your water usage.

Leak Size	Gallons Per Day	Gallons Per Month	Cubic Feet per Quarter
A dripping leak consumes:	15 gallons	450 gallons	180 Cubic Feet
A 1/32 in. leak consumes:	264 gallons	7,920 gallons	3,168 Cubic feet
A 1/16 in. leak consumes:	943 gallons	28,300 gallons	11,319 Cubic Feet
A 1/8 in. leak consumes:	3,806 gallons	114,200 gallons	45,681 Cubic Feet
A 1/4 in. leak consumes:	15,226 gallons	456,800 gallons	182,721 Cubic feet
A 1/2 in. leak consumes:	60,900 gallons	1,827,000 gallons	730,800 Cubic Feet

# CONTACT AND SOCIAL MEDIA INFORMATION

## MUNICIPAL BUILDING

1 East Main Street, Rockaway, NJ 07866  
973-627-2000

Extensions:

- 1 – Tax Collector
- 2 – Water Clerk
- 3 – Finance
- 4 – Construction
- 5 – Tax Assessor
- 6 – Health Department
- 7 – Municipal Clerk
- 8 – Borough Administrator
- 9 – Registrar
- \* – Department of Public Works
- 217 – Parks and Recreation

[www.rockawayborough.org](http://www.rockawayborough.org)

**HOURS:** Monday – Friday, 8:30 am – 4:30 pm

## POLICE DEPARTMENT

33 Maple Ave, Rockaway NJ 07866  
973-627-1314 (Non-Emergency)

## FIRE DEPARTMENT

1 East Main Street, Rockaway, NJ 07866  
973-625-0006

## DEPARTMENT OF PUBLIC WORKS

21-25 Union Street, Rockaway, NJ 07866  
973-627-7025 or 973-627-2000

**HOURS:** Monday – Friday, 7:30 am – 3:30 pm

For after-hours water/sewer emergencies, call the non-emergency number for the Police Department at 973-627-1314.

## RECYCLING CENTER

21-25 Union Street, Rockaway, NJ 07866  
973-627-7025 or 973-627-2000

**HOURS:** Tuesday through Friday 9:00 am – 2:00 pm,  
Saturday 9:00 am – 12:00 pm  
**CLOSED ON SUNDAY, MONDAY, HOLIDAYS,  
AND DURING SNOW EVENTS**

## HEALTH DEPARTMENT

(Randolph Township Shared Services)  
502 Millbrook Avenue, Randolph, NJ 07869  
973-627-2000 extension 6 or 973-989-7050  
**HOURS:** Monday – Friday, 8:30 am – 4:30 pm

## PARKS AND RECREATION

1 East Main Street, Rockaway, NJ 07866  
973-627-2000 extension 217

## PUBLIC LIBRARY

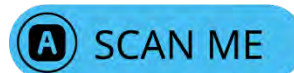
82 East Main Street, Rockaway, NJ 07866  
973-627-5709 • [www.rblibrary.org](http://www.rblibrary.org)  
**HOURS:** Monday/Wednesday 12:00 pm – 8:00 pm,  
Tuesday/Thursday/Friday 10:00 am – 6:00 pm,  
Saturday 10:00 am – 2:00 pm

## SOCIAL MEDIA



**FACEBOOK:**  
Borough of Rockaway  
Rockaway Borough Fire Department  
Rockaway Borough Parks and Recreation  
Rockaway Borough Police  
Rockaway Borough Public Library

**RECYCLE COACH: RAVE (SMART911):**



# A GUIDE TO HEALTHY HABITS FOR CLEANER WATER

Pollution on the streets, parking lots and lawns is washed by rain into storm drains, then directly to our drinking water supplies and the ocean and the lakes our children play in. Fertilizer, oil, pesticides, detergents, pet waste, grass clippings: you name it and it ends up in our water.

Stormwater pollution is one of New Jersey's greatest threats to clean and plentiful water, and that's why we're all doing something about it.

By sharing the responsibility and making small, easy changes in our daily lives, we can keep common pollutants out of stormwater. It all adds up to cleaner water, and it saves the high cost of cleaning up once it's dirty.

As part of New Jersey's initiative to keep our water clean and plentiful and to meet federal requirements, many municipalities and other public agencies, including colleges and military bases, must adopt ordinances or other rules prohibiting various activities that contribute to stormwater pollution. Breaking these rules can result in fines or other penalties.

**AS A RESIDENT, BUSINESS, OR OTHER MEMBER OF THE NEW JERSEY COMMUNITY, IT IS IMPORTANT TO KNOW THESE EASY THINGS YOU CAN DO EVERY DAY TO PROTECT OUR WATER. SEE PAGE 11.**

## Grasscycling!

**It's fast, easy, and better for your lawn.**

**STEP 1** Set the blade height of your traditional or mulching mower to 3 inches.

**STEP 2** Cut your lawn before or when the height of your grass reaches 4 inches. Leave the grass clippings on the lawn.

**STEP 3** The grass clippings will break down into the lawn as a natural fertilizer. Use the time saved to enjoy your lawn!

**Grasscycling.**  
**Just mow and go!**



# YOUR 2024 GUIDE TO RECYCLING IN ROCKAWAY BOROUGH



INCLUDING PICK-UP SCHEDULES (PG. 2-3) & WHAT TO RECYCLE WHERE (PG. 6-7)

## ROCKAWAY BOROUGH RECYCLING CENTER

21-25 UNION STREET • ROCKAWAY, NJ 07866

**HOURS:** TUES. - FRI. 9:00AM-2:00PM •

SAT. 9:00AM - 12:00PM

CLOSED ON SUNDAY, MONDAY, HOLIDAYS,  
AND DURING SNOW EVENTS

[www.rockawayborough.org](http://www.rockawayborough.org)

PRSR STD  
U.S. POSTAGE  
PAID  
DOVER, NJ  
PERMIT NO. 607

POSTAL PATRON  
ROCKAWAY, NJ 07866

**Questions?**  
Call 973-627-7025  
Monday-Friday 9:00am-2:00pm